

Our research environment

The research infrastructure includes theoretical and clinical institutes, departments, working groups and external institutes in the field of neurosciences. The CTNR also acts as a catalyst for new research collaborations beyond the current environment.



Be part of it

- ✓ MD and PhD candidates
- ✓ Research in a medical or natural / life / engineering / social scientific field with a focus on neurosciences

Be informed

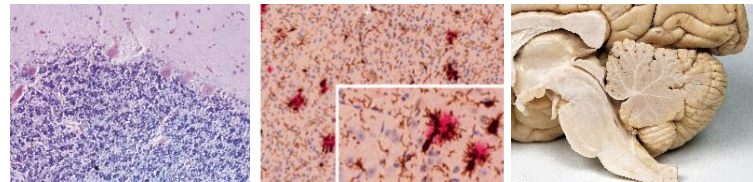
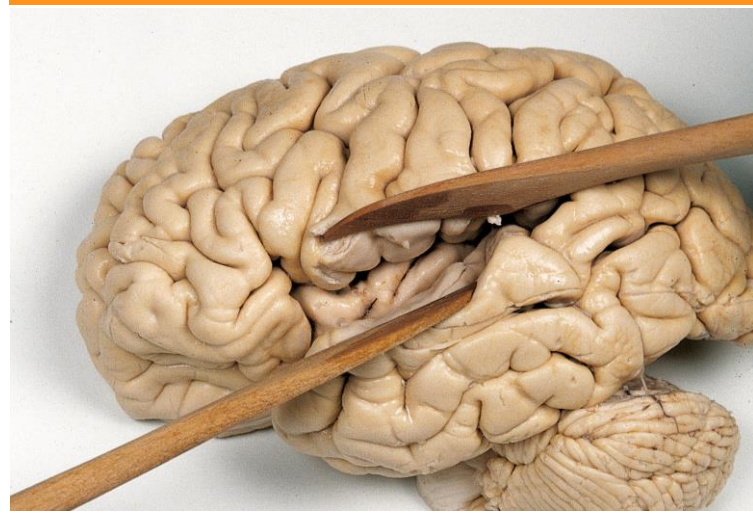
➤ www.neuroscience-rostock.de

Centre for Transdisciplinary Neurosciences Rostock (CTNR)
Universitätsmedizin Rostock, Zentrum für Nervenheilkunde
Gehlsheimer Str. 20, 18147 Rostock

Phone: +49 (0) 381 494 9521

E-Mail: ctnr@med.uni-rostock.de

Do your Doctorate or Master Thesis at the Centre for Transdisciplinary Neurosciences Rostock (CTNR)



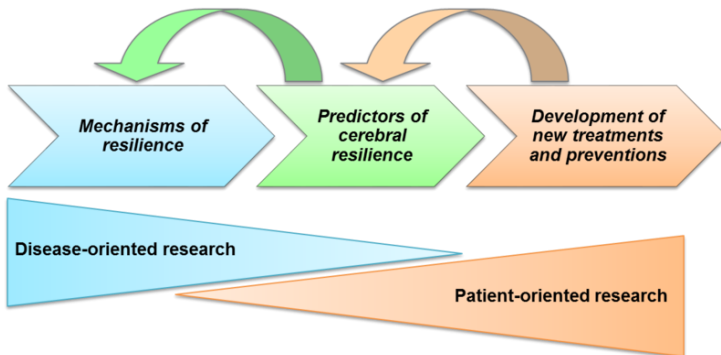
*Resilience in Neurodegeneration –
from the Model to the Patient
to the Population*

Who we are

The Centre for Transdisciplinary Neurosciences Rostock (CTNR) represents one of the three main scientific areas at the University Medical Centre Rostock. The overall aim of the CTNR is to identify and target mechanisms in neurodegeneration to implement innovative therapeutic concepts for primary and secondary neurodegenerative processes.

Our missions

- ✓ Clinical and patient-centered research
- ✓ Disease-orientated research
- ✓ Excellence and innovation

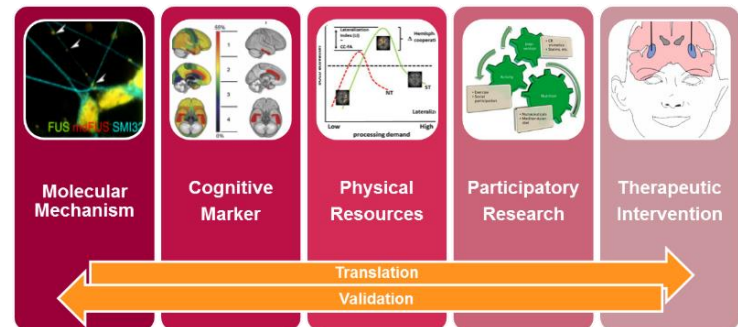


Our visions

- ✓ Developing new diagnostic and prognostic markers as well as instruments for disease-modifying therapeutic interventions
- ✓ Offering integrative platforms for clinical research with interdisciplinary approaches of basic, disease and patient-oriented research

Our topics

- ✓ Mechanisms of resilience and their interplay with neurodegenerative processes
- ✓ Precision medicine to establish predictors for cerebral resilience in primary and secondary neurodegeneration in humans
- ✓ Adoption of continuous bi-directional translation pathways for development of new treatments and preventions in neurodegenerative disease



Our competencies

Research

- ✓ Clinical research platform for neurosciences
- ✓ Networks and interdisciplinarity
- ✓ Grant writing support

Education and qualification

- ✓ Soft skill courses
- ✓ Thesis advisory committee
- ✓ Clinician and medical scientists programmes

Networking events

- ✓ Lecture series and Lecture of excellence
- ✓ Summer schools

